

VURSA™ Gear Oil Filtration Systems

The new VURSA™ gear oil filtration system from Kaydon represents a significant advancement in high-performance filtration for various industrial applications. The rugged, yet lightweight, compact, and ergonomic system brings versatility to the industrial filtration market. It allows for different flow, voltage, filtration, and installation options all in a small, self-contained unit, suitable for use in a wide-range of applications.

The new VURSA™ elements complement the system design with high-efficiency and high-capacity filter elements for both particulate and water removal. They provide the maximum protection possible in a uniquely minimal element envelope. A 25 micron element is included with every VURSA™ system shipment.



Specifications

Dimensions/Weight: <i>System</i> <i>Element</i>	21"W x 15" D x 22"H (533 mm x 381 mm x 559 mm) 85 lbs (38.56 kg) 6 1/4" OD x 1 7/8" ID x 12"L (152 mm x 47 mm x 305 mm)
Inlet/Outlet Connection	1 5/16" - 12UN-2A SAE Straight Thread Inlet 3/4" - 16UNF-2B SAE Straight Thread Outlet
Motor	2.41 hp (1.8 kw), 1720rpm at 60 Hz, 3.5 amp Explosion-Protected (IP55)
Pump	4.75gpm (18 lpm), Gear Pump, Variable Speed Optional at 60 Hz
Vessel	150 psi pressure rating; 22 psi element by-pass, 45 psi optional
Electrical	480 VAC / 3.5 amp / 60 Hz or 380 VAC / 3.5 amp / 50 Hz
System Gauge	Standard Pressure Gauge (0-150 psig)
Materials of Construction	System: Aluminum, Stainless Steel, and Brass Elements: Buna O-Ring, Urethane, Nylon, Micro-glass Media
Fluid Compatability	Mineral Oils, Gear Oils, Hydraulic Oils, Turbine Oil, Cooling Oil, Transformer Oil, Honing Oil, other non-synthetics; contact Kaydon for full material compatability 706.884.3041 or filtration@kaydon.com (maximum visosity: ISO 460)

Applications

▪ Gear Oil Filtration:

- Power Plant Coal Pulverizers
- Cement Mill and Mining Cone and Roller Crushers
- Hydro Station Governor Systems
- Hydro Station Tainter Gates
- Power Plant Cooling Tower Draft Fans

▪ Hydraulic Oil:

- Process Centrifuge
- Mining Drilling Machines
- Injection Molding Machines
- Marine and Large Construction Cranes

▪ Lubricating Oil:

- Large Diesel Engines
- Paper Mill Desorber

▪ Transformer Oil, Power Plants

▪ Turbine Oil, Power Plants

Element Particulate and Water Removal Performance

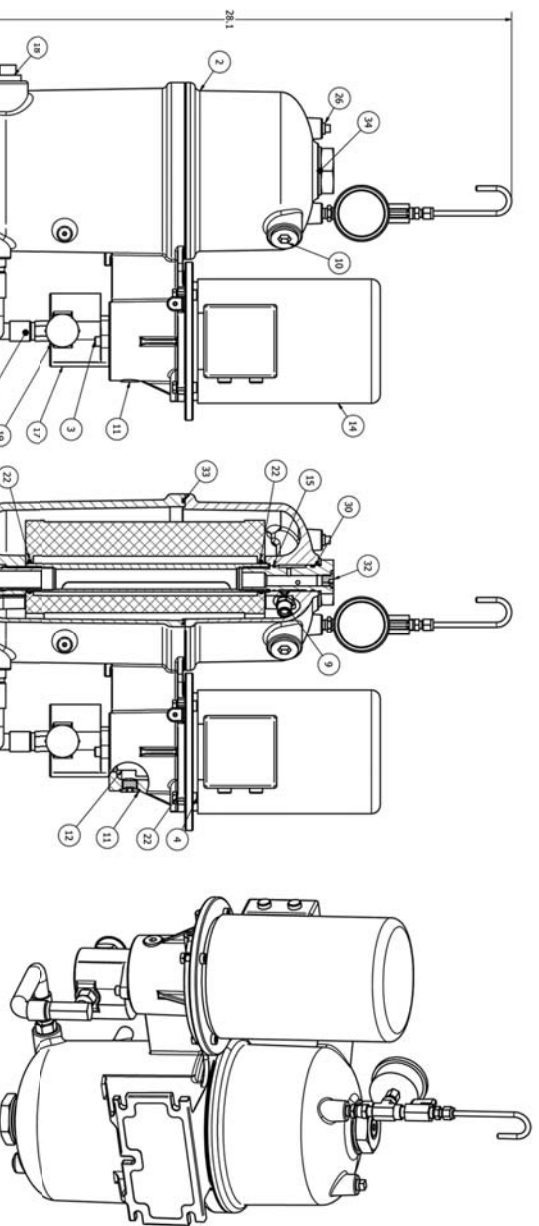
KV-6012-6 Beta 6.4_(c) = 1000

KV-6012-13 Beta 13.5_(c) = 1000

KV-6012-25 Beta 25.7 (c) = 1000

KVA-6012-5 Beta 5.0_(c) = 1000
(water absorptive capacity) 1.6 liters

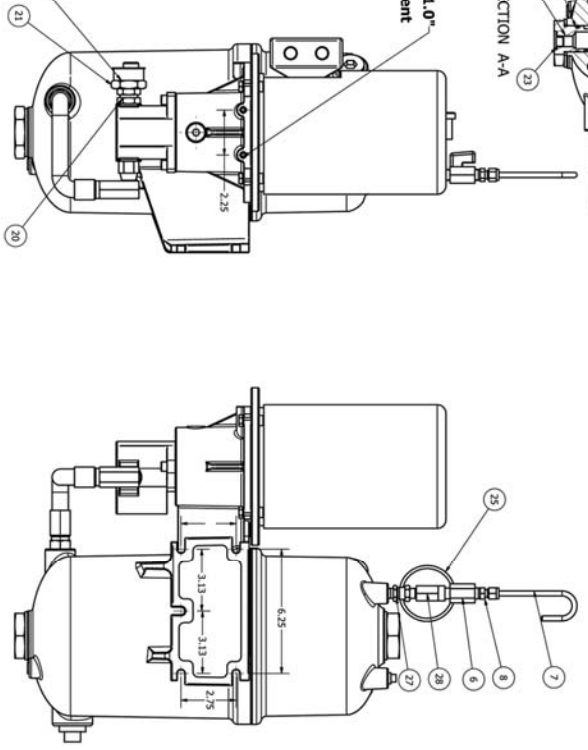
Ordering Information
LVHV-3



Outlet Female Port - 3/4-16 UNF-2B, SAE-ORB

Female Threads for External Attachment - 2 x 1/4-20 UNC - 2B, ∇ 1.0"

Inlet Male Connector - 1 5/16-12 UN-2A, SAE-ORB



ITEM QTY	PART NUMBER	DESCRIPTION
1	1	Aluminum System Body
2	1	Aluminum System LP
3	2	Boots for Gear Pump
4	2	Boots for Motor Pump
5	1	Bottom SS Connection Bolt
6	1	Breath Ball Valve
7	1	Breath Tube
8	1	Breath Tube Adapter
9	1	Bypass Valve
10	1	Bypass Valve Plug
11	1	Castor Wheel
12	1	Coupling Subassembly
13	1	Drive Flange
14	1	Electric Motor
15	1	Fit Connection Seal
16	1	Flex Hose Subassembly
17	1	Gear Pump
18	1	Motor Pump
19	1	Inlet Coupler Protector
20	1	Inlet Port Adapter One
21	1	Inlet Port Adapter Two
22	4	Nuts for Motor Connection
23	1	Outlet Port Protector
24	1	Pressure Transducer Element
25	1	Pressure Gauge Part Plug
26	1	Pressure Gauge Swivel Adapter
27	1	Pressure Gauge Swivel Adapter
28	1	SS Center Tube
29	1	SS Center Tube
30	2	Second Connection Seal
31	1	Top SS Connection Bolt
32	1	Top SS Connection Bolt
33	1	Washer
34	2	Washers
35	4	Washers for Motor Connection

- Notes:
1. Particulate Filtration System Configuration
 2. Inlet: 1 5/16-12 UN-2A Male SAE-ORB Connector
 3. Outlet: 3/4-16 UNF-2B Female SAE-ORB Part
 4. Approximate Fluid Flow Rate: 3 GPM
 5. Estimated Dry System Weight: 85 Lbs (50kg)
 6. Pressure Rating: 150 PSi (10.34 bar)
 7. Electrical: 380V/350 to 480V/60, 1.8 HP (1.35 kW)
 8. Material: SAE Class 4 and/or Above
 9. Torque: 100 in-lb (11.3 Nm) for Coupling Subassembly
 10. Installation Torques:
 - 60 Footpounds, Bottom SS Connection Bolt With Respect To SS Center Tube
 - 20 Footpounds, Top SS Connection Bolt With Respect To Bottom SS Connection Bolt
 - 20 Footpounds, Vent Plug With Respect To Top SS Connection Bolt
 - 20 Footpounds, Motor Part Plug
 - 20 Footpounds, Coupling Plug
 - 20 Footpounds, Two Inlet Adapters With Respect To Gear Pump
 - 15 Footpounds, Four Motor Bolts With Respect To Motor Nuts, Respectively
 - 10 Footpounds, Pressure Gauge Plug
 - 10 Footpounds, Drain Plug
 - 5 Footpounds, Motor Controller Bolts

Kaydon Custom Filtration Corporation
 1571 Lukken Industrial Drive West
 Lagrange, GA USA 30240
 www.kaydonfiltration.com

1.800.241.2342 Toll Free
 1.706.884.3041 Direct
 1.706.884.3835 Fax



Certificate No.: 002232



©2008 Kaydon Filtration All Rights Reserved

EXTENDING YOUR ENERGY

Printed in the USA